

Residencial San Marino - "Viviendas desde 173.000€*

C/ Presidente Adolfo Suárez, 21001.

Huelva - Pescadería



General Information

A NEW WAY OF LIVING

A new residence concept for a new way of living. The San Marino Residential Complex meets all the requirements you expect in a top-quality home. In Pescadería you can enjoy a fantastic residential area with flats with 2, 3 or 4 bedrooms.

Immediate access to all kinds of services, transport routes, health facilities... and furthermore, it is located in Pescadería, an environment that is currently expanding. The San Marino Residential Complex has all the ingredients for making your life easier. Flats with 2, 3 or 4 bedrooms, with a garage and a storage room, private interior spaces and all the advantages offered by its location close to strategic points in the city.

Developed by: Inmobiliaria Osuna S.L.U

Residencial San Marino - "Viviendas desde 173.000€*

C/ Presidente Adolfo Suárez, 21001.

Huelva - Pescadería

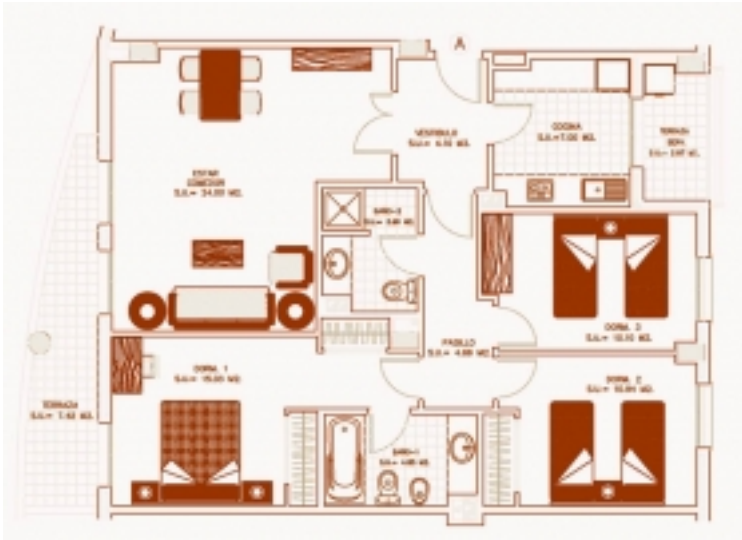




Housing types

Flat with 3 rooms

125,36 m²

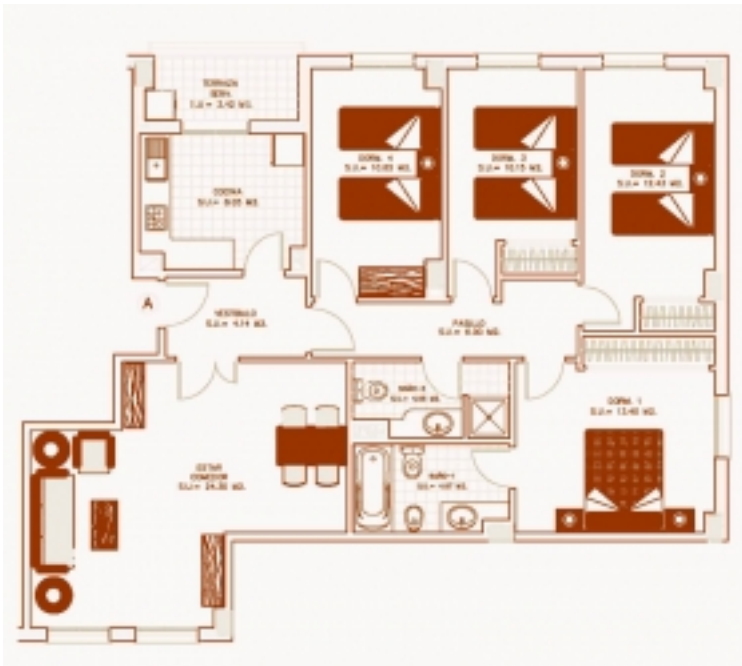




Housing types

Flat with 4 rooms

133,97 m2





Specifications

GENERAL CHARACTERISTICS

Structure Reinforced concrete foundations and structure.

Facade Cavity wall formed of double brickwork, air chamber and thermal and sound insulation.

Outside finishing Facade finished by a single layer of rendering combined with natural stone coating, depending on areas.

COVERINGS

Floors Synthetic laminate flooring, finished with wooden shape in hall, corridor, living room and bedrooms

Ceramic stoneware paving on kitchen, laundry room and bathrooms.

Stoneware paving on balconies and terraces.

Vertical surface Bedrooms: lining and gypsum plaster with hidden corner protectors in the edges.

Kitchen and bathrooms: ceramic tiles coating of up-to date design.

Ceilings Smooth plasterboard in kitchens, bathrooms, hall and corridor and where necessary to hide canalisations.

Plaster mouldings or pitted on hall, corridor, bedrooms and living room.

Paint Smooth plastic paint on walls in a colour to be chosen by the T.M

Smooth plastic paint on ceilings of the whole apartment

JOINERY

Interior finishing work Reinforce entrance door with noble wood finishing, anti-jemmy hinges, security lock and peephole

Inside doors with noble wood finishing. Glazing doors in living room, corridor and kitchen, with identical characteristics as the inside doors

Built-in wardrobes with sliding or folding doors with shelf, hanging rail and lined inside with wooden colour finishing. Exterior finishing work

Aluminium frames in a colour to be chosen by the T.M. "Climalit" type or similar glazing with thermal and sound glass. Blinds with lacquered aluminium slats in a colour to be chosen by the T.M.

SANITARY WARE

Vitrified porcelain sanitary ware. Set in sink on natural stone countertop in bathrooms stated in project

Enamelled metal baths with anti-slip base and handles in main bathroom. Chrome single lever mixer taps in all the bathrooms.

INSTALLATIONS

Plumbing Plumbing installation with supply to divide each wet room. Drains will be made with PVC pipes

Inlets and outlets for dishwasher, washing machine. Sanitary hot water production by gas heater of holding combustion.

Electricity Electrical installation that can be inspected in accordance with REBT. Telecommunications Telecommunications installation for TV, Telephone and internet service. The number of sockets depends on the apartment type, with a minimum of two

Climatisation pre installation Climatisation pre installation for air conditioning (cold-hot) in all bedrooms and living room.

Natural gas Natural gas installation with connection to each apartment.

Electronic video entry phone

By means of a plate outside the doorways and an intercom in each apartment with an electric door opener.

COMMON AREAS

Common areas of the building Common areas paving on natural stone floor tiles in halls and stairs way.

Entrance halls decoration according to the T.M.

Garage door with automatic opener system.

Underground parking paving made with concrete finishing and anti abrasive treatment.

Lifts with automatic doors in cabin and floors and underground access in those stated on project.

Common interior complex

Common interior complex treated according to project profile.

Residencial San Marino - "Viviendas desde 173.000€*

C/ Presidente Adolfo Suárez, 21001.

Huelva - Pescadería



Location of the development

Residencial San Marino - "Viviendas desde 173.000€*

C/ Presidente Adolfo Suárez, 21001.

Huelva - Pescadería

